



**Horsepower (iMC model)**

Gross: 179 kW 240 HP/2100 min<sup>-1</sup>

Net: 177 kW 237 HP/2100 min<sup>-1</sup>

**Operating weight range**

23,200 kg

**Blade capacity**

4,65 m<sup>3</sup>



# D71PXi-24



## Smart Construction **solutions.**

Discover how the power of data combined with iMC 2.0 can bridge the gap between new and experienced operators, achieve a final grade in a single pass, and enhance your site's productivity.

# Next Generation Intelligence



## Intelligent Machine Control

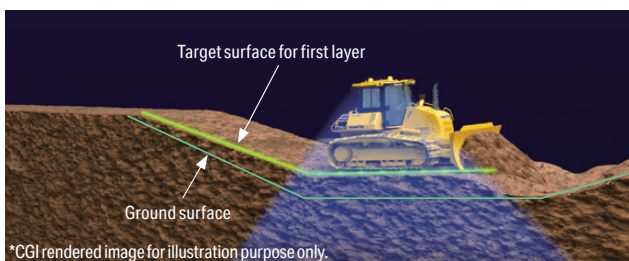
Improved machine efficiency for work ranging from heavy dozing to finish grading with intelligent Machine Control technologies.

- ▶ Lift layer control
- ▶ Quick surface creation
- ▶ Proactive dozing control
- ▶ Standard intelligent machine control
- ▶ No cables, climbing, connections
- ▶ Tilt steering control
- ▶ Adopts two antennas supporting multiple GNSS
- ▶ Improved machine control
- ▶ Innovative, integrated, intelligent

### intelligent Machine Control (IMC) 2.0

D71EXi/PXi-24 utilises intelligent Machine Control 2.0 a GNSS\* system that automatically controls the blade to 3-dimensional design data. Machine Control 2.0 utilises the industry's first Proactive Dozing Control logic, lift layer control, quick surface creation, and tilt steering control. A two antenna system supporting multiple GNSS which provides less down time and more work time. These added features make for improved production and efficiency.

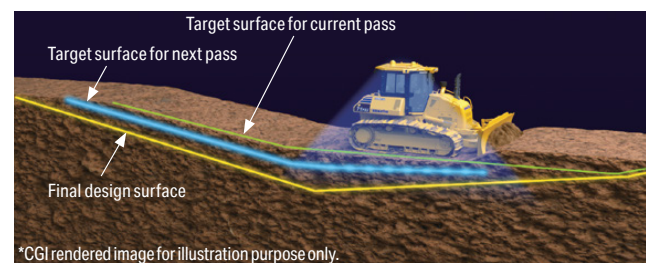
\* GNSS (Global Navigation Satellite System): General term for satellite positioning systems such as GPS, GLONASS, etc.



Lift layer control illustration

### Additional Features

- ▶ Quick surface creation
- ▶ Tilt steering control
- ▶ Auto/manual switch
- ▶ Cut/fill offset switch
- ▶ Back grade mode switch
- ▶ Two Antennas Supporting Multiple GNSS
- ▶ Reliability of blade accuracy



Proactive dozing control illustration

## ICT

- ▶ Large multi-lingual high resolution LCD monitor
- ▶ Multi-monitor with troubleshooting function to minimise down time
- ▶ Energy Saving Operation
- ▶ ECO guidance
- ▶ ECO gauge
- ▶ Fuel consumption display
- ▶ Ecological operation report for assistance

In order to support efficient operation, the following four messages are displayed for fuel saving operation.



Fuel consumption display

- 1) Avoid excessive engine idling
- 2) Use economy mode to save fuel
- 3) Avoid hydraulic relief pressure
- 4) Avoid over load

# Workability features



## PAT dozer with adjustable pitch

A power angle power tilt dozer blade with adjustable blade pitch system is available. For the D71EXi/PXi-24.

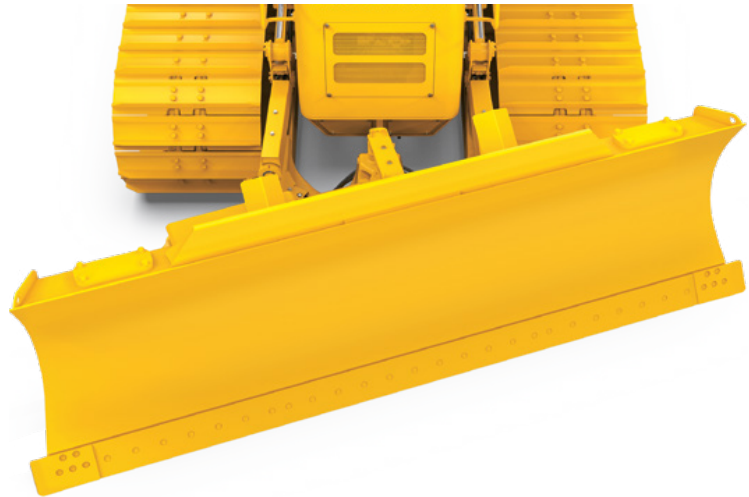
The hydraulic blade tilt and angling function expands versatility and productivity in a variety of applications.

The manually adjustable blade pitch further expands the versatility and productivity.

## Super-slant nose provides excellent blade visibility

The D71EXi/PXi-24 incorporates Komatsu's super-slant nose design. Komatsu's innovative design provides excellent blade visibility for improved machine control and increased efficiency and productivity.

Blade capacity (ISO 9246)  
**4.65 m<sup>3</sup>**



# Outstanding productivity



## Ecology features

- Komatsu's new emission regulations-compliant engine
- Auto idle shutdown function
- Auto-decelerator
- Auto E mode

## Productivity and workability features

- Great production due to engine power-up and large-capacity PAT blade
- Excellent blade visibility due to super-slant nose design
- HST control system Hydraulically-driven cooling fan
- Additional selectable working mode H mode\* (High engine idle speed mode)

*\*H mode is installed to only North American specification*

- PAT dozer with adjustable pitch Steering speed increase
- Enhanced steering and working mode

## Controllability features

- Palm Command Control System (PCCS)
- HST with electrical control

## Working environment

- Integrated ROPS (ISO 3471) cab
- Rear view monitor system
- Operator presence sensing system
- Bluetooth® radio with USB port
- LED lights

## Reliability and maintenance features

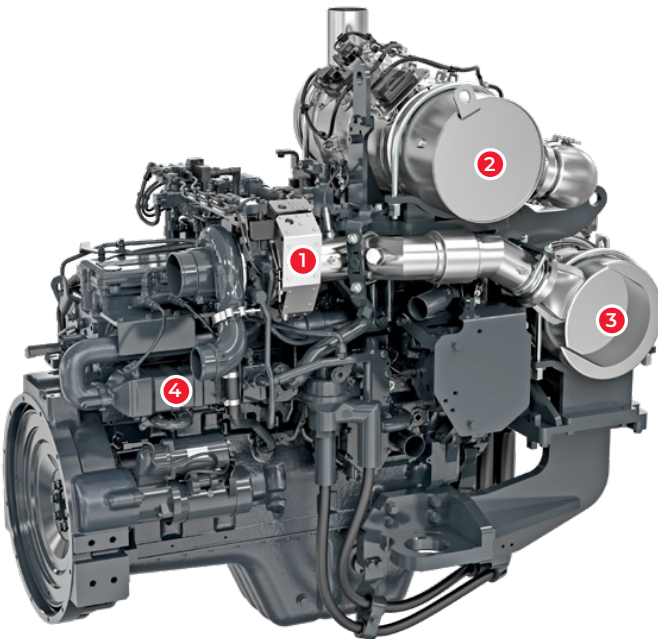
- Parallel Link Undercarriage System (PLUS)
- Hydraulically-driven swing-up fan
- Easy greasing of equaliser bar side pin
- Easy sampling

## Information and communication (ICT)

- Large multi-lingual high resolution Liquid Crystal Display (LCD) monitor
- Multi-monitor with troubleshooting function to minimise down time
- Energy Saving Operation Ecological operation report for assistance



# Ecology features



## Komatsu new engine technologies

### Komatsu's New Emission Regulations-compliant Engine

U.S. EPA Tier 4 Final and EU Stage V emissions require the reduction of NOx emissions. In addition to refining the Tier 4 Interim technologies, Komatsu developed a new Selective Catalytic Reduction (SCR) device in-house.

- 1 Variable Geometry Turbocharger (VGT)
- 2 SCR
- 3 Komatsu Diesel Particulate Filter (KDPF)
- 4 Exhaust Gas Recirculation (EGR) Cooler

## Enhanced workability

- ▶ Hydrostatic transmission (HST) control system
- ▶ Effective work for HST
- ▶ Enhanced blade mode
- ▶ Long track-on-ground and oscillating track frame
- ▶ Production improvement

Rated engine horsepower (Net)

**177 kW (237 HP)**





**MAYDAY**

R E N T A L

[maydayrental.com.au](http://maydayrental.com.au)